

# MATHERSON CRANE HIRE



56 Callemondah Drive  
PO Box 7157  
Gladstone Q 4680

Ph: 07 4978 2085

Fax: 07 4978 2318

Bookings: 0408 704 059

Email: [office@mathersoncranehire.com.au](mailto:office@mathersoncranehire.com.au)

[www.mathersoncranehire.com.au](http://www.mathersoncranehire.com.au)

## 20t Mobile Crane – Pick and Carry



### Ancillary Equipment:

- Brick Cage
- Materials Cage
  - Dog Box
- Pallet Forks

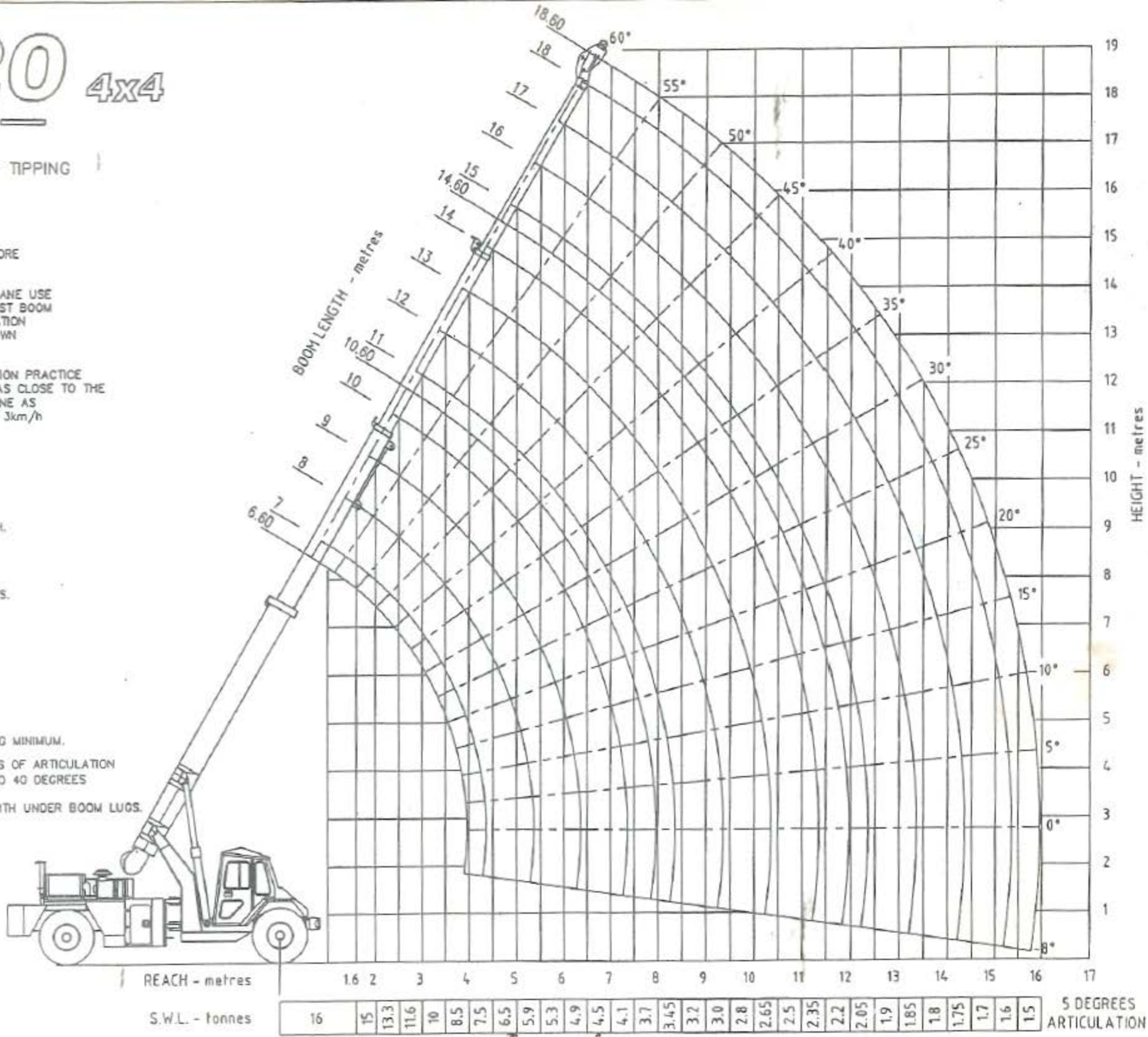
# FE-420 4x4

## — 20 TONNE —

CAPACITY CHART AT 66.67% OF TIPPING

### MOBILE CRANE IMPORTANT NOTES

- AXLE LOCK OUTS MUST BE ENGAGED BEFORE ANY LIFTING TAKES PLACE
- THIS LOAD RATING CHART APPLIES TO CRANE USE ON A FIRM LEVEL SURFACE. USING LARGEST BOOM SECTION POSSIBLE FOR EACH LIFT. OPERATION OUTSIDE LIMITS OF REACH OR ANGLE SHOWN ON CHART IS NOT PERMITTED
- WHEN MOBILING A LOAD CAREFUL OPERATION PRACTICE SAYS THAT THE LOAD SHOULD BE KEPT AS CLOSE TO THE GROUND AND TO THE FRONT OF THE CRANE AS POSSIBLE, AT SPEEDS NOT IN EXCESS OF 3km/h
- HOIST ROPE COMPENSATOR OPERATES ON BOOM 2 ONLY
- ROPE FITTED IS #16mm 6 x 25 IWRC
- FULL POWER BOOM OPERATING MODE  
OUT - BOOM 2 EXTENDS TO FULL LENGTH, THEN BOOMS 3 & 4 EXTEND IN EQUAL AMOUNTS  
IN - BOOMS 3 & 4 RETRACT IN EQUAL AMOUNTS, THEN BOOM 2 RETRACTS.
- HOOK BLOCK CAPACITIES  
MODEL LW 80 WINCH  
2 FALLS 8000kg FULL DRUM  
HOOK BLOCK MASS 110 kg  
4 FALLS 18000kg FULL DRUM  
HOOK BLOCK MASS 140 kg
- REAR AXLE WEIGHT OF CRANE = 11600 KG MINIMUM.
- THIS CHART IS FOR LIFTING TO 5 DEGREES OF ARTICULATION  
REFER CHART No CH14525 FOR LIFTING TO 40 DEGREES OF ARTICULATION.  
REFER CHART No CH14524 FOR LIFTING WITH UNDER BOOM LUGS.

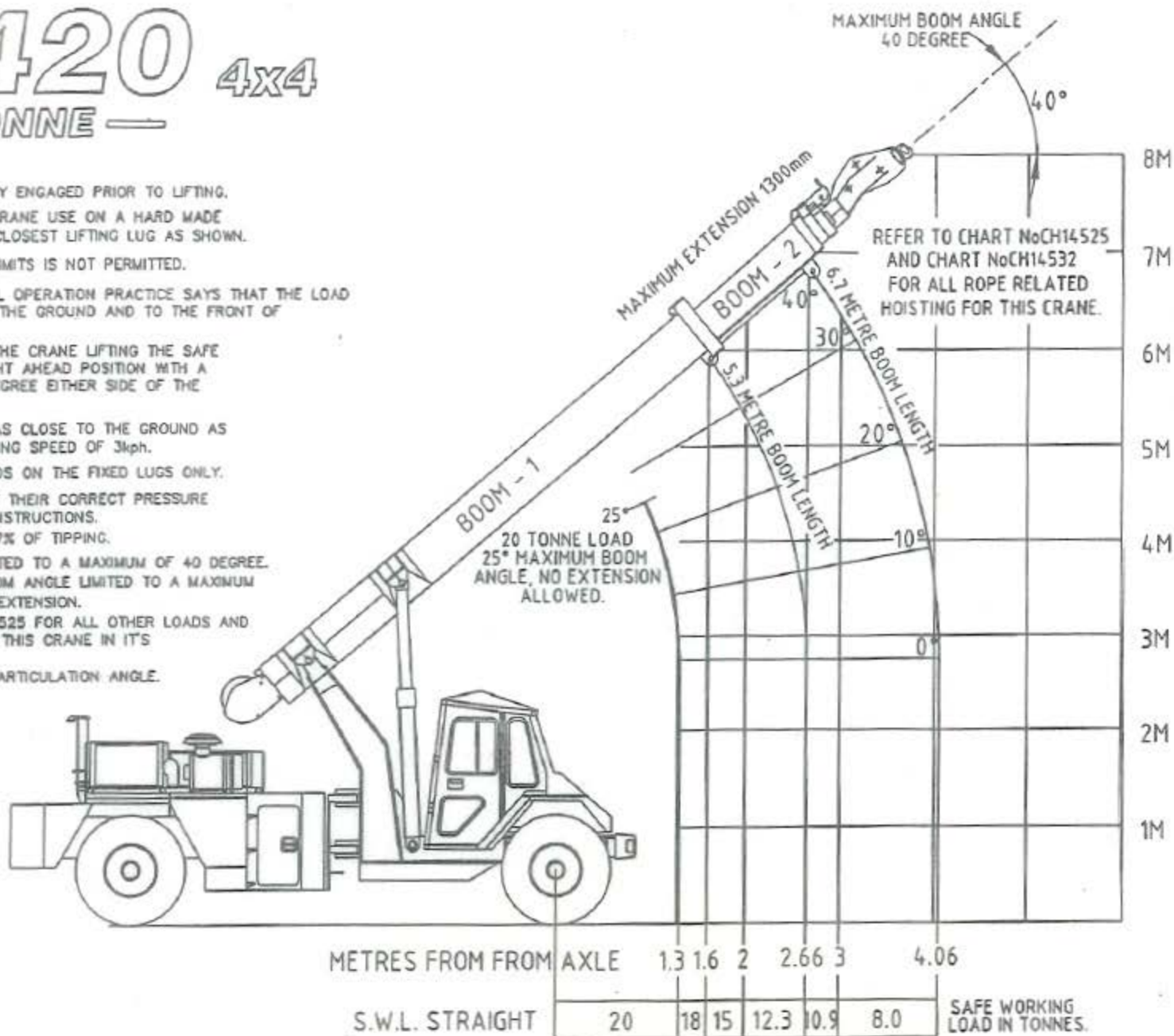




# FE-420 4x4

## — 20 TONNE —

1. AXLE LOCK OUTS MUST BE FULLY ENGAGED PRIOR TO LIFTING.
2. THIS LOAD CHART APPLIES TO CRANE USE ON A HARD MADE UP LEVEL SURFACE USING THE CLOSEST LIFTING LUG AS SHOWN.
3. OPERATION OUTSIDE OF THESE LIMITS IS NOT PERMITTED.
4. WHEN MOBILING A LOAD CAREFUL OPERATION PRACTICE SAYS THAT THE LOAD SHOULD BE KEPT AS CLOSE TO THE GROUND AND TO THE FRONT OF THE CRANE AS POSSIBLE
5. THIS LOAD CHART IS BASE ON THE CRANE LIFTING THE SAFE LOAD AS SHOWN IN THE STRAIGHT AHEAD POSITION WITH A MAXIMUM ARTICULATION OF 5 DEGREE EITHER SIDE OF THE STRAIGHT AHEAD POSITION.
6. ALL LOADS SHALL BE CARRIED AS CLOSE TO THE GROUND AS POSSIBLE AT A MAXIMUM CRAWLING SPEED OF 3kph.
7. THIS CHART IS FOR LIFTING LOADS ON THE FIXED LUGS ONLY.
8. TYRE PRESSURES SHOULD BE AT THEIR CORRECT PRESSURE AS SHOWN IN THE OPERATORS INSTRUCTIONS.
9. CHART CAPACITY IS RATED 66.67% OF TIPPING.
10. WARNING - BOOM ANGLE IS LIMITED TO A MAXIMUM OF 40 DEGREE.  
WARNING - 20 TONNE LOAD BOOM ANGLE LIMITED TO A MAXIMUM OF 25 DEGREES WITH NO BOOM EXTENSION.
11. REFER TO LOAD CHART No CH14525 FOR ALL OTHER LOADS AND LIFTING CONDITIONS RELATED TO THIS CRANE IN ITS ARTICULATED CONDITION.
12. DO NOT EXCEED THE 5 DEGREE ARTICULATION ANGLE.



# FE-420 4x4

## — 20 TONNE —

CAPACITY CHART AT 66.67% OF TIPPING

### MOBILE CRANE IMPORTANT NOTES

- AXLE LOCK OUTS MUST BE ENGAGED BEFORE ANY LIFTING TAKES PLACE
- THIS LOAD RATING CHART APPLIES TO CRANE USE ON A FIRM LEVEL SURFACE, USING LARGEST BOOM SECTION POSSIBLE FOR EACH LIFT. OPERATION OUTSIDE LIMITS OF REACH OR ANGLE SHOWN ON CHART IS NOT PERMITTED
- WHEN MOBILING A LOAD CAREFUL OPERATION PRACTICE SAYS THAT THE LOAD SHOULD BE KEPT AS CLOSE TO THE GROUND AND TO THE FRONT OF THE CRANE AS POSSIBLE, AT SPEEDS NOT IN EXCESS OF 3km/h
- HOIST ROPE COMPENSATOR OPERATES ON BOOM 2 ONLY
- ROPE FITTED IS #16mm 5 x 25 IWRC
- FULL POWER BOOM OPERATING MODE OUT - BOOM 2 EXTENDS TO FULL LENGTH, THEN BOOMS 3 & 4 EXTEND IN EQUAL AMOUNTS  
IN - BOOMS 3 & 4 RETRACT IN EQUAL AMOUNTS, THEN BOOM 2 RETRACTS.
- HOOK BLOCK CAPACITIES  
MODEL LW 80 WINCH  
2 FALLS 8000kg FULL DRUM  
HOOK BLOCK MASS 110 kg  
4 FALLS 16000kg FULL DRUM  
HOOK BLOCK MASS 140 kg
- REAR AXLE WEIGHT OF CRANE = 11600 KG MINIMUM.
- THIS CHART IS FOR LIFTING TO 40 DEGREES OF ARTICULATION  
REFER CHART No CH14532 FOR LIFTING TO 5 DEGREES OF ARTICULATION.  
REFER CHART No CH14524 FOR LIFTING WITH UNDER BOOM LUGS.

